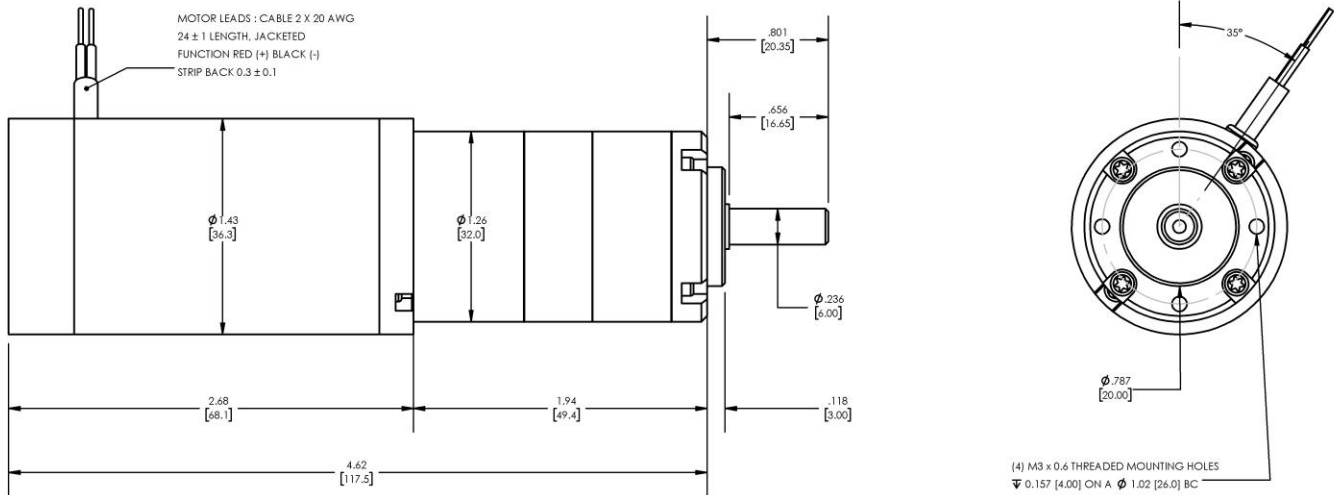


Model Number:
MMP TM36-268D-24V GP32-014


DIMENSIONS ARE INCHES [MM] UNLESS OTHERWISE STATED

PLANETARY GEARMOTOR OUTPUT PARAMETERS:	VALUE	UNITS	TOLERANCE
Gearhead Ratio (exact)	13.73 : 1		
Gearhead Shaft Output Speed (at full-load)	326	RPM	MAX
Gearmotor Rated Continuous Torque	2.6	In-Lbs	MAX
Gearmotor Rated Peak Torque	7.5++	In-Lbs	----
Gearhead Standard Backlash	93	Arc Minutes	MAX
Gearhead Efficiency	75%	----	----
Output Shaft Radial Load Capacity	16	Lbs	MAX
Output Shaft Axial Load Capacity	5	Lbs	MAX
Gearmotor Total Weight	1.1	Lbs	MAX

++ All Peak Torque values are dependent upon duty. Contact our sales office for details.

DC MOTOR PERFORMANCE PARAMETERS:	VALUE	UNITS	TOLERANCE
Rated DC Voltage	24	DC VOLTS	----
Rated Continuous Current	1.00	AMPERES	----
No-Load Speed	6316	RPM	MAX
Rated Speed	4473	RPM	+/- 15%
Rated Continuous Power Out	14	WATTS	+/- 15%
Rated Continuous Torque	4.1	OZ-IN	----
Peak Torque (motor only)	12	OZ-IN	----
No-Load Current	0.20	AMPERES	MAX
Back EMF Constant (Ke)	3.8	V/KRPM	+/- 10%
Torque Constant (Kt)	5.1	OZ-IN/AMP	+/- 10%
DC Armature Resistance	7.00	OHMS	+/- 15%
Armature Inductance	2.61	mH	+/- 15%
Armature temperature	155	DEG. C	MAX

NOTES:

- ENCODER & BRAKE OPTIONS AVAILABLE – [FOLLOW THIS LINK FOR DETAILS](#)
- NEMA MOUNTING FLANGE OPTION AVAILABLE – [FOLLOW THIS LINK FOR DETAILS](#)

MIDWEST MOTION PRODUCTS

DESIGN, MANUFACTURING & DISTRIBUTION - MOTION CONTROL EQUIPMENT

www.midwestmotion.com

email: sales@midwestmotion.com